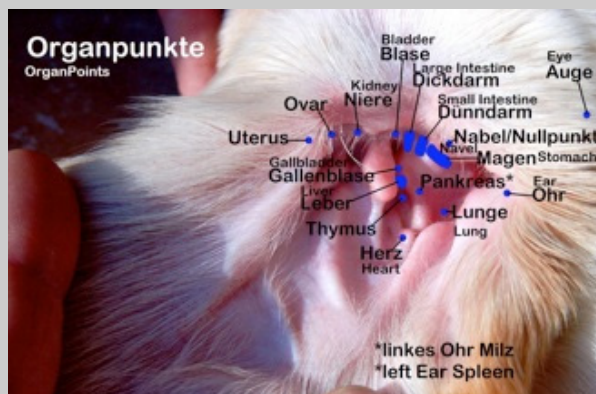


Equine and Canine Ear Acupuncture Cards

Equine and Canine Ear Acupuncture Cards of Orthopaedic-, Organ- and the Heart Meridian Points, as Example for the Pathways of the Meridians at the Ear



Summary

In the first moment ear acupuncture seems to be very different to the well known body acupuncture. Initially, the modern style of ear acupuncture was based only on a scientific, western approach, while modern body acupuncture was first based on the traditional Chinese approach. Nowadays they come together in both diagnosis and treatment. In the meantime we have more than 50 years of experience with ear acupuncture in human and more than 20 years of experience in animals.

Nowadays both sides come together and are building a bridge between TCM and western medicine. In this paper it is shown, how to work easily with ear acupuncture, to treat orthopaedic diseases, internal diseases and much more. All the new maps of orthopaedic points (hip point, elbow point etc.), the organ points (liver point, lung point etc.) and all the pathways of the meridians on the dog's ear that I have developed over the last year are introduced.

Keywords: Ear acupuncture, Dog, Horse

Introduction

It is our good fortune that acupuncture is for us today so easily accessible. Thanks largely due to Dr. Paul Nogier, whose huge contribution in the pioneering field of ear-acupuncture and RAC (VAS) Control Diagnosis, opened the door to a modern, scientific acupuncture. Further contributions have been made by the European Academy of Acupuncture (EAA) with Prof. Dr. Frank Bahr as its President.

Without discarding traditional Acupuncture, the attempt was made to locate the exact ear acupuncture points for every organ, nerve, joint and vertebra, as well as every other area of the body, including functional points. So we have in ear acupuncture points like the ACTH point, Endorphin point, Histaminic point, Prostaglandin point, or organ points, e.g. liver point, kidney point, supra renalis point, thalamic point, and so on. Amazingly, both methods, modern ear acupuncture and traditional body acupuncture, lead us to the same therapy points.

The further we delve into both methods, the ear acupuncture that is closer to western conventional

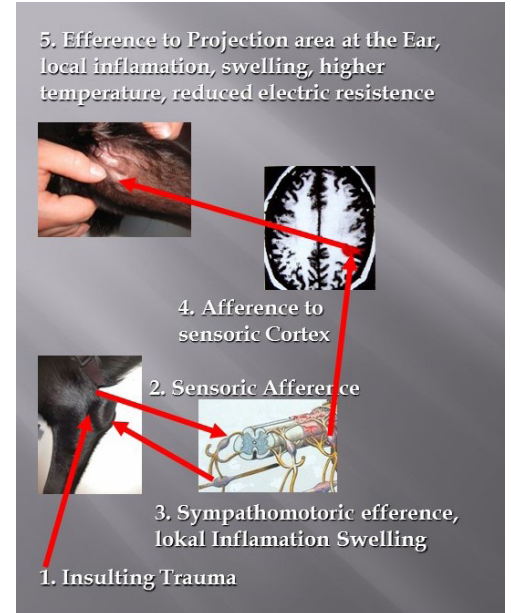
medicine and body acupuncture that is developed by far eastern medicine, the more interesting it becomes. We see the many similarities and parallels which are so manifold. This should not be surprising since both methods describe the same conditions though by a different means.

Still today, for me and for many people with western education, the more simple method for a diagnosis and therapy is the western medicine approach, using modern ear acupuncture. The ear provides us with ear points for organ systems, e.g. Kidneys, liver, thymus point, or locations of joints and vertebrae.

What is the Way Ear Acupuncture Works?

Body acupuncture works in the scientific sense in a neurophysiologic way, via hormonal pathways, through mechanisms by bioactive substances, and at last the bio-cybernetic way. These same mechanisms we find again in ear acupuncture. But some things are different. An example how ear acupuncture works is demonstrated in a male black Labrador patient. It had an acute inflammation in the elbow with big swelling of the joint and intensive pain. When I searched the connected ear point for treatment, I saw also a clear pronounced swelling in the elbow point at the ear (figure).

The neurophysiologic explanation is as follows: when there is a trauma in the elbow (step 1) we have peripheral irritation and pain transmitted by sensory afferent nerves to the spinal cord and back by somatomotoric efferent nerves to the affected joint leading to local inflammation (swelling, pain, heat in the joint, step 2). But the sensory afferent irritation reaching the spinal cord not only answers the irritation by efferent reaction back to the local trauma (step 3), but also by an efferent central leading reaction, passing the thalamus and reaching the sensorial area in the brain cortex and the animal realizes pain (step 4) as we can see on the fMRI (arrow). From the cortex the irritation leads directly to the ear reflex zone and to local microinflammation (step 5). We find swelling, pain, increasing local temperature and reduced electric resistance of the point. The body has created, immediately after the acute trauma, an active ear acupuncture point.

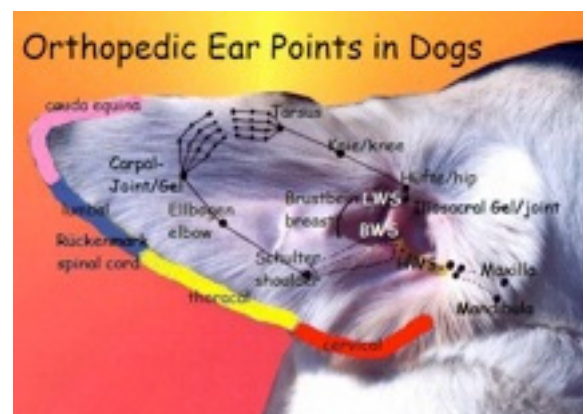


from PCLAC book

Methodology of Creating the Orthopedic Ear Chards

The ear chart created here was developed with the help of the double laser technology under RAC/VAS check in 3 dogs and 3 horses. RAC and VAS are synonyms for a method of finding active acupuncture points by an autonomous reflex to the stimulation of the active point. This reflex, one can feel on the pulse, only happens when an active, that means imbalanced acupuncture point is stimulated. RAC means "reflex auriculo cardial", because in the first time Nogier supposed that the changing in the pulse was caused by a stronger heart contraction. VAS means "vaso autonom signal"

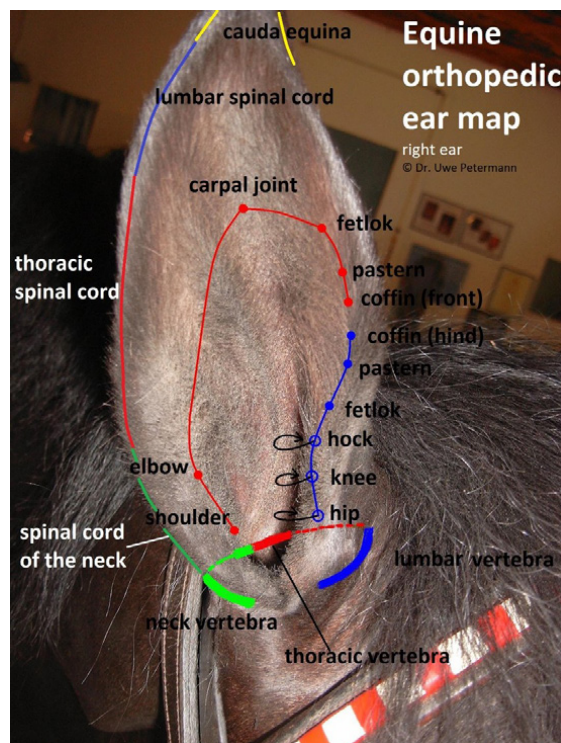
because, as we know now, the reflex works by autonomous contraction of the artery venous shunts. With the double-laser-technique the joint points, the spinal column and the points for each tooth in the upper and lower jaw of all 3 dogs were treated with a 90watts pulsed laser, Fr. C, according to Nogier. (Pysiolaser (former "Mutimed"-laser), Reimers and Janssen company, Berlin). At the same time the ear is diagnostically searched for RAC resonance with a 2nd pulsed laser also set with Frequency C. A corresponding point in the ear was clearly found for each point of the body. For the research two white Labrador females, 1 and 3 years old, and an 11 year old Terrier, female were available. The horses were warmblood geldings 5 and 12 years old and a 14 years old Welsh horse. All points were marked on the ear and at the same time



drawn to an ear chart. This happened in all 3 dogs and horses. The results were then compared. The RAC/VAS Rebounds at the ear were to be found very exactly and clearly. A complete correspondence of the determined ear locations could be seen

Lameness- Diagnostic and Diagnostic of Organ Disease by RAC- Control

Orthopaedic diagnostics on animals are more difficult than on humans, for the veterinary doctor has no information about place, severity level of the pain and above all, he has no information which special movement causes the pain reaction in which place of the body. The veterinary merely can see on which foot/ limb the animal has the lameness. Further, he can try to provoke a pain or reaction e.g. by stretching, bending or palpating the limb. In this way, he can draw conclusions on the point of the lameness. Finally, the location of the source of lameness can be limited by radiographic diagnostics. Through this, the place for the local therapy is often incorrectly chosen. Controlled Acupuncture could offer valuable diagnostic assistance, if an ear chart with accurate orthopaedic point localizations is available. So the ear-acupuncture-chart in veterinary medicine has not only therapeutic, but also an important diagnostic implications. Different authors created ear charts of some animal species in the past few years. The points of the ear located with electrical point detecting devices were in most cases found with well-known orthopaedic pain localizations or by laser provocation tests.



Pictures: (from PCLAC book), Ear Chart of the Joint and Vertebra Points. HWS= neck vertebrae, BWS= thoracic vertebrae, LWS= lumbar vertebrae (overview in horses and dogs)

We use ear acupuncture for diagnosis and for treatment. How can we find „active ear –points“? First we find active ear points with electric point- finder. In body acupuncture we can find every body point by reduced electric skin resistance with help of an electric point- finder. Here we have no difference between „active“ points, that means acupuncture points that are not in balance and „non active“ points, that are not out of balance and so not must be treated. At the ear only „active“ points have reduced electric skin resistance and so can be determined by electric point finders.

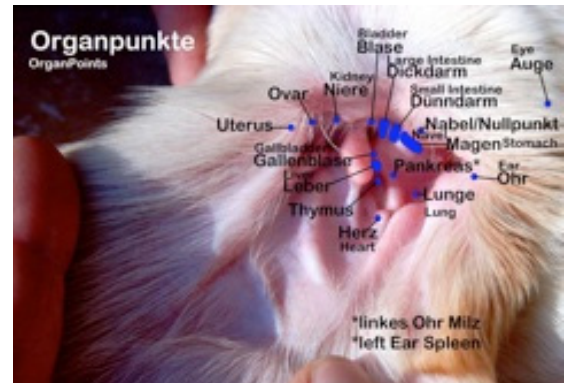
The second way to find „active“ points is very much easier by RAC-control. Pulse feeling (RAC-Control) is nearly indispensable as an instrument for locating the pathologic points of the ear (and for me as well as those on the body). The RAC (Reflex auriculo-cardial or VAS vasoton autonom signal), as already mentioned, is a genial discovery chanced upon by the French Doctor of acupuncture, Paul Nogier, and is based on a autonomous micro stress reaction. With help of RAC it is, as to have a detailed look into the body often much more specific as with picture giving procedures.

The Procedure of Lameness Diagnostics by RAC- Controlled Ear Acupuncture

First, of course, I do a clinical examination. After that one has to look for active ear- points, that means looking for the affected joint. So, if you have a lameness in the right forelimb you irradiate the area of the ear that represents the forelimb with the laser frequency „C“ and at a certain point you will get a clear RAC- rebound. You mark the point, compare it with the card and realize that you got the point of e.g. the shoulder joint.. So you not only have found out, what joint is affected, you also have at the same time the main point for acupuncture treatment of the lameness. As next you look for the area of the vertebrae also with laser frequency „C“ and you find the connected blockade in the spinal column and in the same moment the masterpoint of its treatment.

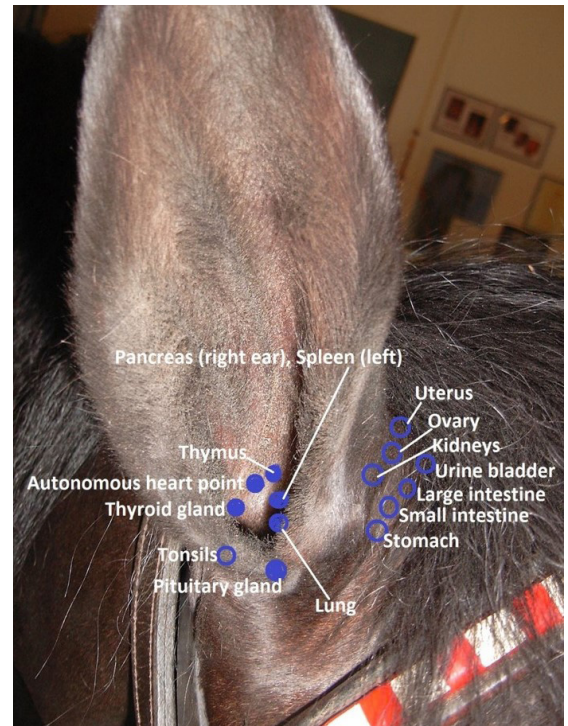
The Organ- Points at the Ear

While transferring the orthopedic points to the ear was very simple, finding out the organ points was very difficult and cannot be explained in this lecture. But also these points have been found in the 3 dogs/horses and have been compared afterwards with very good correspondence.



Diagnostic and Treatment by the Body- Points at the Ear

In internal diseases RAC controlled ear acupuncture again is a very helpful diagnostic system. We look with the laser frequency „B“ in the area of the organs, the Concha of the ear, for RAC –rebounds and we find e.g. the point of the kidney and the point of the lung. This is telling us, we have a problem in the kidney connected with a lung problem, as we find in allergic lung disease. Perhaps we also find the Thymus point and a point of a tooth and then we already not only have the organ points but also the point of the main reason of the allergic disease of the lung, the disturbing focus point of the tooth. And with the detected points we also have the masterpoints of treatment in this patient.



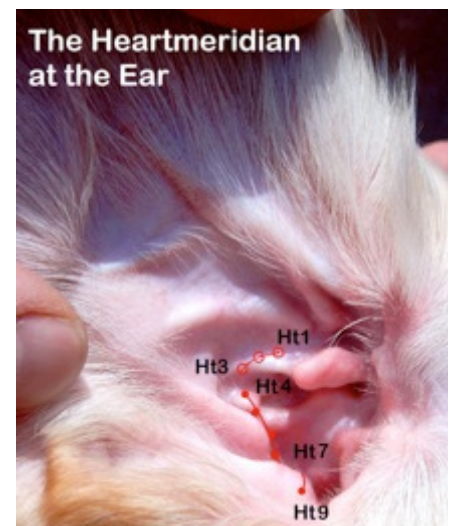
Pictures: (from PCLAC book), Ear Chard of the Organ Points (horses and dogs)

Transposition of Body- Points to the Ear

In the EAA during the last ten years the complete meridian system has been transposed to the ear from the body by RAC-control. Thus, we can treat every acupuncture point not only at its location on the body but also at its corresponding/ resonating location on the ear.

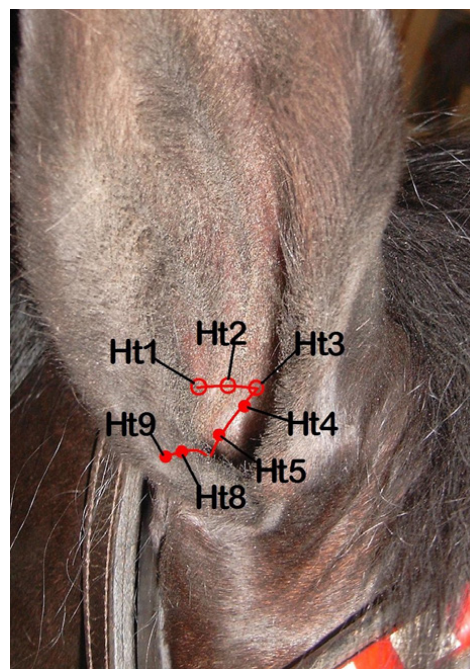
The Meridian Points at the Dogs Ear

While working on my 2nd book about ear acupuncture in horses and dogs I decided to try to transpose all the body points in horses and dogs to the ear. If I really had known what a lot of work was waiting for me to do this, I wouldn't have done it. But now, after I have finished, I am glad to be able to present the complete ear meridian maps of all 14 channels. Again the two Labradors, now 5 and 7 years old and a Hanoverian and a Welsh gelding, 6 and 19 years old were taken as "test persons" for transposing the points. The kind of activating the ear points at the body was known from human acupuncture. As already mentioned, irradiation of joints with the so called „orthopedic frequency“ „C“ according to Nogier activates the ear point of the radiated joint. So this cannot be a possibility to activate the ear projection of a body



acupuncture point. In human medicine was found, that you can irradiate a body acupuncture point with the frequency „5“ according to Bahr to activate the corresponding ear point. This, of course, worked in horses and dogs in the same way. So I looked for all body acupuncture points by RAC control with the special meridian frequencies according to Reininger. He found out, that each meridian is in resonance with special laser frequency. When I am searching e.g. with the „liver“ frequency“, I only get RAC rebounds on „liver“ points. So I looked for all body points with the meridian laser frequencies. When I had found one point, I turned over to the frequency „5“ and irradiated the point to activate its ear representation and looked with a 2nd laser with frequency „5“ at the ear. In this way I found for each body acupuncture point its corresponding ear point and draw it down in the map. So we can treat now every body point as well in dogs at the ear. And of course we can treat every ear point with the idea of ear acupuncture at the body. When we have e.g. an uterus problem as a pyometra (without an acute state with absolute indication of operation) we can treat the Uterus point, Sp6, the Ovarian point, Sp5 and in some cases the Hypophysis point for Gonadotropine regulation, what is Liv13 and we have the same effect as if we treat the ear points. But the huge advantage of ear acupuncture is in diagnostic. We only have to test a small area of the ear for RAC rebounds to come to a diagnosis as „Liver“, „Heart“, „Lung“ or „shoulder“, „elbow“, „carpus“.

Pictures: An Example of a meridian pathway on the dogs/horses ear: the Heart meridian compare HT4 with the organ points and see its is the Heart point).



Ear- Points and Their Identical Body- Points

Following is a list of ear points with their corresponding body points and their anatomical or functional areas of influence as determined by VAS/RAC investigation. The Liver point of the ear (identical with body point LIV 8) supports the liver. The Lung point of the ear (LU 7) supports and regulates the function of the lung. The uterus point of the ear (SP 6) supports the uterus. That means when the organ is ill, you just can give the point to treat the illness. This looks very simple and it is very simple indeed, but it works!

Sample of the most important organ points at the ear and their corresponding body point

- LU 7 is identical with the lung point of the ear
- LU 11 Larynx point of the ear.
- LI 4 Thalamus point, important for pain reduction
- LI 20 Nose point, against sinusitis
- SP 2 Spleen point - left side, Pancreas point - right side
- SP 4 Interferon point
- SP 5 Ovarian point
- SP 6 Uterus point
- HT 3 Motoric heart point (for the heart muscle)
- HT 4 Autonomous heart point
- SI 3 Plexus coeliacus (autonomous nerve plexus for the intestine), spasmolytic master point
- PC 6 Stellate Ganglion
- TH 3 Cortisol point.
- TH 4 Insulin point
- TH 5 Thymus point,
- GB 1 Eyes point
- LIV 13 Hypophysis point (ACTH)

LIV 3 Neural liver point
LIV 8 Liver point

Different options to Get RAC Rebounds

For getting RAC rebounds on active points at the ear (and at the body as well) we have a lot of options. The best results we get with lasers especially when we have the right frequencies that are in resonance to the point, e.g. frequency “C” for orthopedic points and Frequency “B” for organ points.

Also very good results we get with electric fields. Here we use the so called 3 volt hammer. With its +pole we find the gold points, points in sufficiency and with the –pole we find the silver points, points that are in heat. The body also reacts with RAC on Gold or Silver needles, an Ultracain® ampulla (anaesthetics) and other resonance e.g. histamine, prostaglandin, β -mimetic drugs. The advantage of RAC is localisation of active acupuncture points quickly and effortlessly. RAC finds and distinguishes the most important points. RAC opens the way for diagnosis of lameness via the ear, diagnosis of internal diseases and prophylaxis by finding of affected or weakened organs before illness achieves.

What Tools do We Need for Ear Acupuncture in Dogs?

For humans special ear needles are available. These needles we can't use for dogs. They are too big and fall out of the ear immediately. But we can use fine painless needles for body acupuncture, semi-permanent- needles, injection of local anaesthetics and injections of homeopathic drugs. A very special kind of long term treatment is setting Gold- beads into ear acupuncture points. This is very simple and has the same effect than Gold beads acupuncture in body points. My personnel favourite tool for ear acupuncture is the laser. With laser we only need 20 sec of time to stimulate each point.

Ear Acupuncture Contra Body Acupuncture

There is not any “contra” at all! Ear acupuncture and body acupuncture can now be used in the western thinking way and in the TCM way. Both ways are right! Both ways are very helpful in a lot of illnesses. Very often one comes thinking in both different ways to the same treatment. But for me it seems to be much easier for beginners in acupuncture to start with the western idea of ear acupuncture and to learn later on step by step the TCM way and by this one also learns the connections between these two approaches to illness and their treatments.

Acute and Chronic Laminitis in Horses (read article in the AJTCVM)

[> Return to Homepage](#)